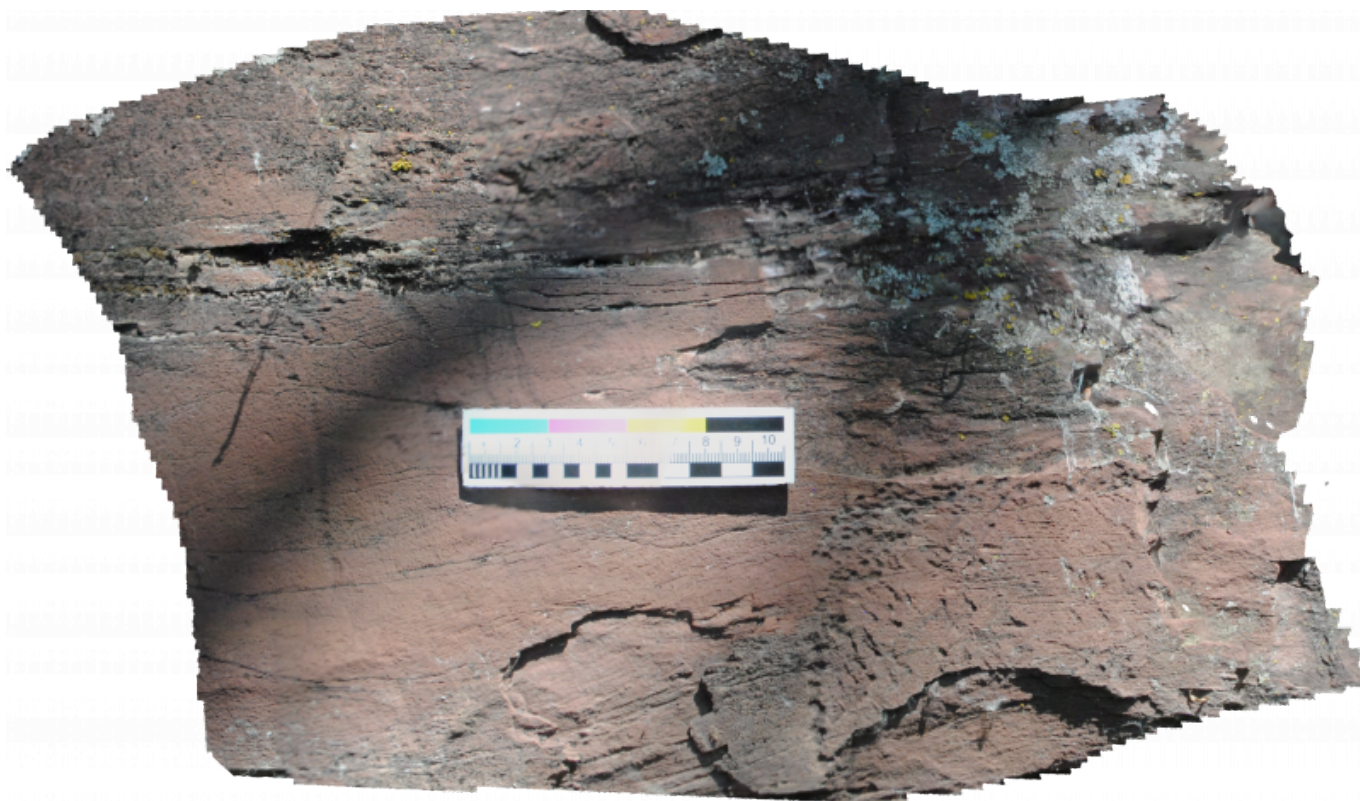


Shalabolinskaya Pisanitsa. Area 2. Area 2.Panel 3



Description

In the right lower corner of the panel, there are some hard strokes of pecking which are forming smoothly curving line. Perhaps, this is a fragment of a zoomorphic image partly damaged due to the crumbling of the rock crust.

Technical description

The panel size is 0.5x0.4 m. It is located on rocky outcrops of the Devonian sandstone in the lower tier of outcrops. It is turned south-east. The quality of the panel preservation is bad. There are numerous losses of the rock crust including a part of the image.

Method

Retouch

Description authors: V. Konokhov