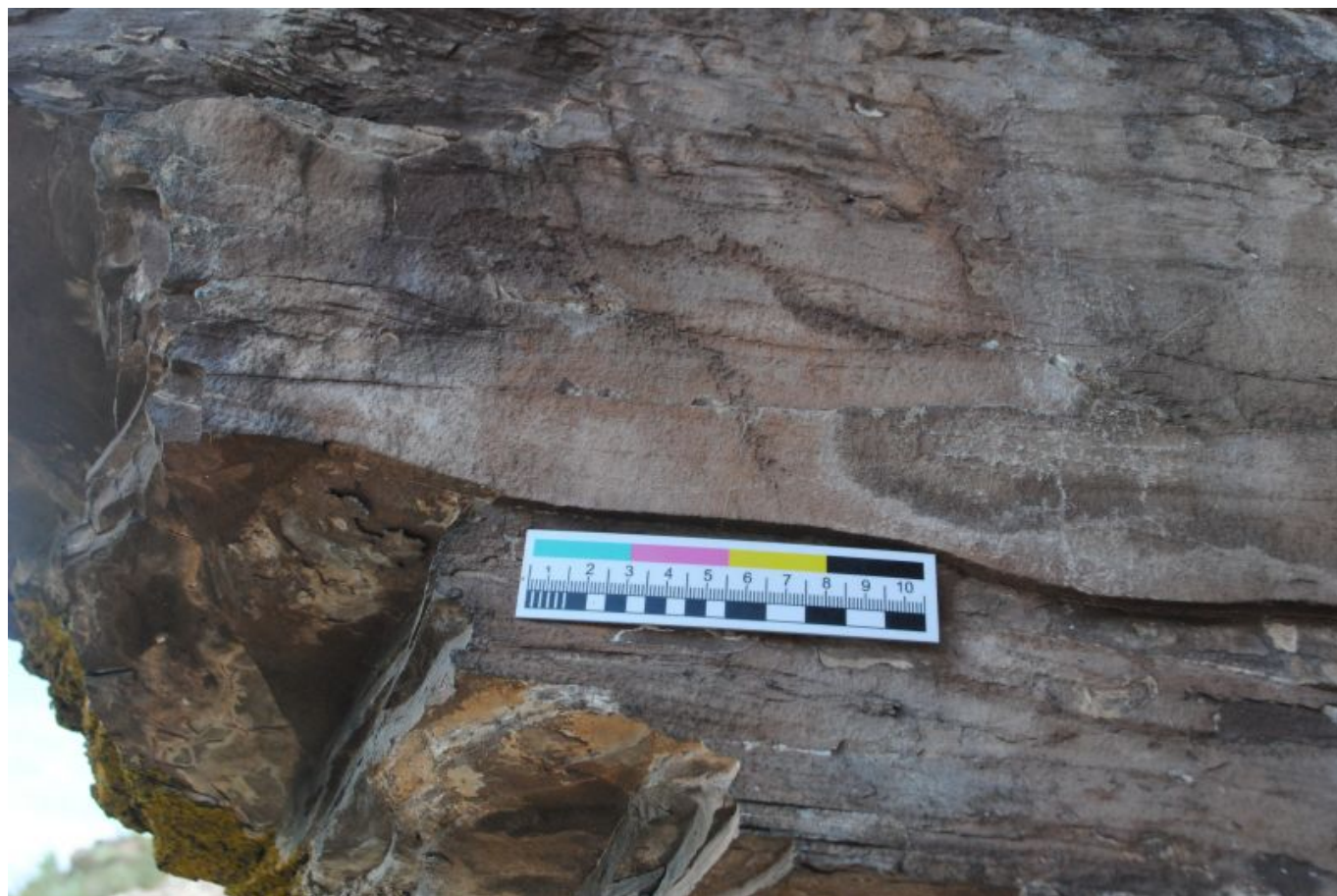


# Poylovskaya Pisanitsa. Panel 1.14



## Description

In the left part, there is a partial image of a moose. We can see a head, a neck, and a back line. The figure is made with pecking.

## Technical description

The panel is located at a height of 1.5 - 1.7 m from the ground surface on the rocky outcrops of the Devonian sandstone, under a small rock canopy. The sizes of the panel are 0.7 x 0.4 m. It is exposed to the southeast.

The panel is badly damaged due to erosion processes and the crumbling of the rock crust.

### Epoch

Neolithic

### Style

Minysinsk

### Method

Retouch

**Drawing image**



*Description authors: V. Konokhov*