

Poylovskaya Pisanitsa. Panel 1.16



Description

The panel has a pecked image of a sign in the form of a triangle. To the left of it, there are some single pecked lines.

Technical description

The panel is located at a height of 1.6 m from the ground surface on the rocky outcrops of the Devonian sandstone. The sizes of the panel are 2.3 x 0.5 m. It is exposed to the southeast. The tilt angle is 10°.

The panel is damaged due to erosion processes. There are some modern inscriptions on the panel.

Method

Retouch

Drawing image

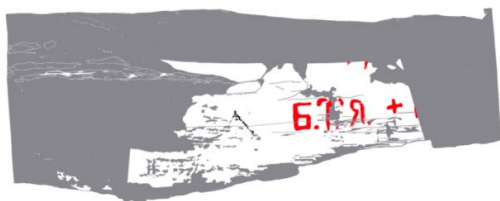
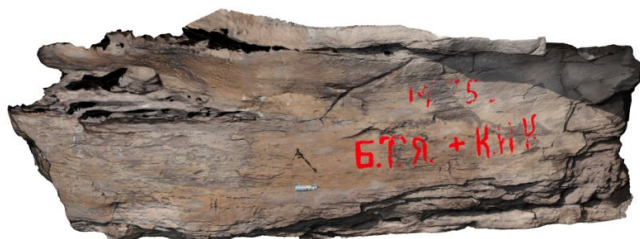
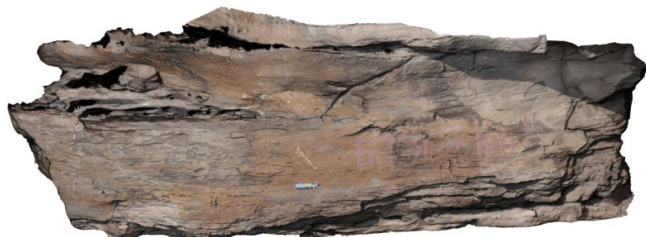


Image overlay



Reconstruction image



Description authors: V. Konokhov