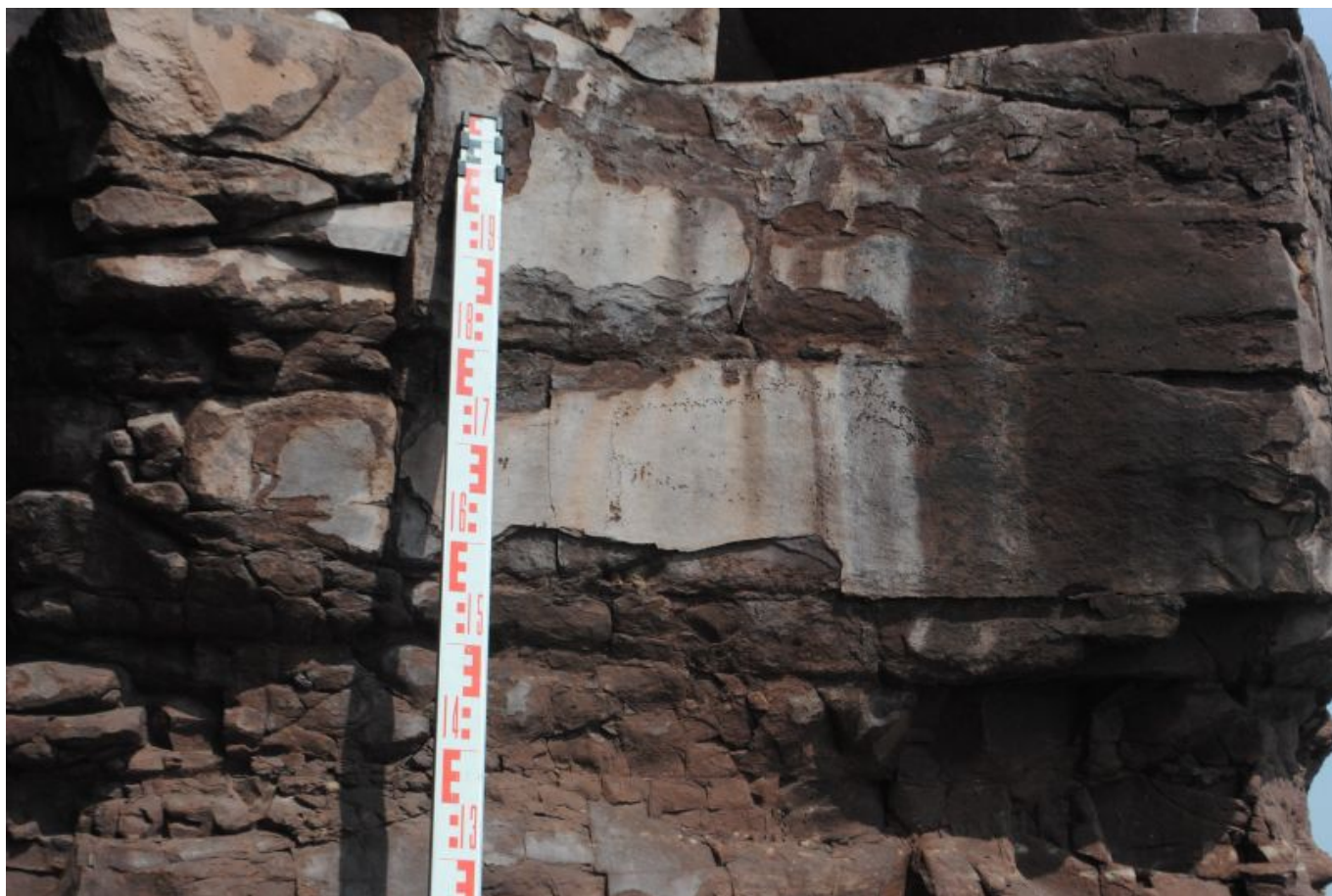


## Berezovaya Mountain. Panel 22



### Description

The panel represents a contour image of an animal (moose?) turned right. We can see a massive trapezoidal body with a highlighted hump, an elongated neck, and short legs. The image is made with non-deep pixel pecking.

### Technical description

The panel is located at a height of 1.5 from the ground surface on the rocky outcrops of the Devonian sandstone. The sizes of the panel are 0.7 x 0.5 m. It is exposed to the south. The panel is damaged by erosion processes and the crumbling of the rock crust.

#### Epoch

Neolithic

#### Style

Minysinsk

#### Method

Retouch

*Description authors: V. Konokhov*