

Gora Kunya. Panel 2



Description

The panel represents two frontal anthropomorphic figures made with pecking. The figures are placed near each other.

Technical description

The sizes of the panel are 0.4 x 0.2 m. The surface of the panel is weathered, the images are patinated.

Epoch

Middle Ages, Ethnographic

Method

Retouch

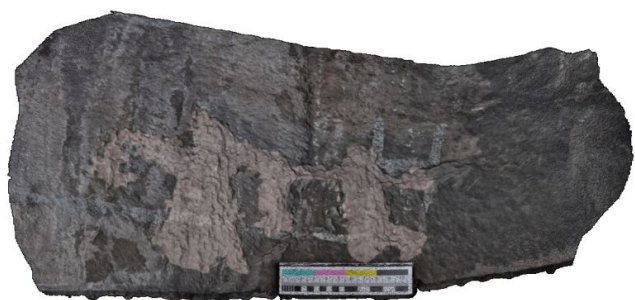
Drawing image



Image overlay



Reconstruction image



Description authors: T. Ermakov